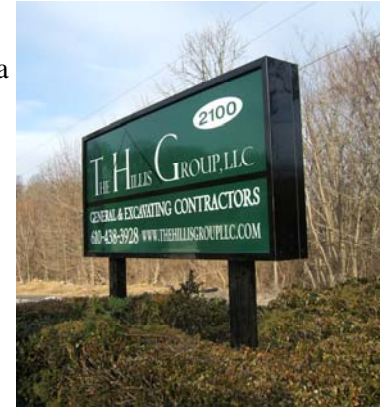


THE HILLIS GROUP, LLC SINCE 2004 GENERAL CONTRACTING & EXCAVATING

Our Company The Hillis Group is owned and operated by Michael W. Hillis. We are a general contracting and excavating company that pride itself on a high level of performance, professionalism, and quality workmanship. The company encompasses three departments (A) Carpentry & Demolition (B) Restoration and (C) Cellular Communications. Each department has a foreman who is dedicated to the project's successful completion. All of our employees have a minimum of 5 years contracting and excavating experience.



Our Philosophy The Hillis Group has retained the same customers since its conception. Our clientele are well-known and respected throughout the industry. For more information, please refer to our trade references. The main focus of our business is to build relationships and develop repeat business.

Our Motto “The project is never complete until the customer is satisfied” The Hillis Group understands the importance of meeting deadlines and ensuring exact project specifications. We will never take shortcuts or compromise workmanship in order to meet a deadline. We properly staff each project and endorse immaculate construction sites.

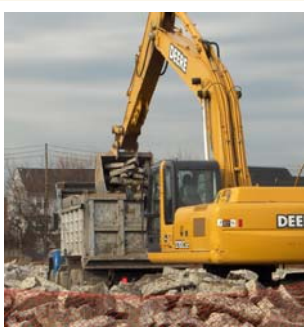
Safety First The Hillis Group practices a zero tolerance for unsafe work practices. Strict safety standards are insisted upon. All employees are provided with the proper safety equipment required for each project. In addition, it is mandated that all employees attend safety trainings to maintain these industry standards.

Our full-time Safety Manager ensures compliance with the highest OSHA / industry standards. We employ an authorized construction (CFR 1926) and general industry (CFR 1910) OSHA Safety and Health Outreach Program Trainer for OSHA 10 and 30 hour safety courses. All employees have earned the OSHA 10 and 30 hour Construction Safety card.

The Hillis Group, LLC has a professional services agreement with Veriforce to ensure our compliance with the operator qualification rule. Owner Michael Hillis has completed the evaluator training program to become an authorized evaluator.

Additionally this company practices strict DOT compliance and each employee must undergo certified random drug and alcohol screenings several times per year. Every employee is issued a handbook requiring their signature as acknowledgement to this policy and that it will be strictly enforced. It is understood that the first offense will automatically result in termination.

Our full-time Equipment Manager performs daily maintenance on all trucks, tractors, and field equipment to ensure the safety of every employee and to reduce down-time. Tools and equipment are inspected daily for cleanliness and reliability. We are proactive in maintaining both a safe and clean environment.





**THE HILLIS
GROUP, LLC
SINCE 2004**

2100 Wood Avenue
Easton, PA 18042

Tel: 610-438-3921
Tel: 610-438-3928
Fax: 610-438-3830

Visit our website at
www.thehillisgroup.com



We Welcome Visitors

Located Minutes
from Route 22

Close to Route 611

Easy Access from
Route 33

Close to Route 78

**GENERAL CONTRACTING & EXCAVATING
SERVICES**

| | |
|---|----------------------------------|
| Structural Demolition | Concrete Demolition and Crushing |
| Site Preparation | Fence Sales and Installation |
| Land Development | Trucking and Hauling |
| Land Clearing and Mowing | Septic Systems |
| Grading and Road Building | Asphalt Paving |
| Cut Right-of-Way Canopy | Telecommunication Site Prep |
| Utility Excavation and Installation | |
| Sanitary & Storm Water Improvements | |
| Land Restoration – Specializing in Residential Areas. | |
| Concrete Foundations, Sidewalks, Aprons, pads, and Frost-walls. | |

Please call our office at (610) 438-3921; (610) 438-3928 OR

| | | |
|---|----------------|------------------------------------|
| Michael Hillis Owner | (484) 764-1225 | michaelhillis@thehillisgroup.com |
| Wade Burnhauser Superintendent | (484) 764-1226 | wadeburnhauser@thehillisgroup.com |
| Bob Milkovitz Foreman Cellular Communications Department | (484) 221-0111 | bobmilkovitz@thehillisgroup.com |
| Brett Ehasz Foreman Restoration Department | (484) 221-1285 | brettehasz@thehillisgroup.com |
| Keith Latourette Foreman Carpentry & Demolition Department | (484) 602-4911 | keithlatourette@thehillisgroup.com |
| Sam Brockman Safety Manager | (484) 553-4706 | sbrockman@thehillisgroup.com |
| Paul Olsen Senior Estimator | | paulolsen@thehillisgroup.com |



**THE HILLIS
GROUP, LLC
SINCE 2004**

2100 Wood Avenue
Easton, PA 18042

Tel: 610-438-3921
Tel: 610-438-3928
Fax: 610-438-3830

Visit our website at
www.thehillisgroup.com



We Welcome Visitors

Located Minutes
from Route 22

Close to Route 611

Easy Access from
Route 33

Close to Route 78

The Hillis Group, LLC Client References

Henkels & McCoy; Pipeline Division: Provide various natural gas pipeline services, including but not limited to trucking, concrete foundations and slabs, right of way restoration, seeding, mulching, and paving. Contact; Bob Haynal (610) 754-6207.

Williams Gas Pipeline: Provide various natural gas pipeline services including chain link fencing, right of way maintenance/restoration and tree clearing/mowing. Contact; Brian Carney (610) 730-3037

US Pipeline: Restoration, chain link fencing, concrete foundations, Contact Sean Holmes (218) 766-7003

JCP&L / First Energy: Underground utility work, concrete foundations, gravel surfacing. Contact Rae Mallin (732) 2124282

Spectra Energy: Provide various natural gas pipeline services, including but not limited to trucking, right of way restoration, seeding, mulching, landscaping and paving. Contact; Frank Brungard (717) 985-3114

Columbia Gas Transmission (NiSource): Right of way restoration, clearing, gravel access roads, lawn installation including seeding and mulching, and landscaping. Contact; John Rinkus (484) 880-2629.

Big Inch Fabricator: Pipeline restoration, gravel surfacing, access road construction, hauling. Contact Ben Hartman (765) 245-9353

The Hajdu Group; General Contractor: Various excavation services targeting manufacturing and chemical companies. Contact; Brian Hajdu (908) 454-1115.

JBL Electric, Inc.; Cellular Industry/Electrical Sub Stations: Concrete foundations, utility excavation, fencing, land clearing, and restoration. Contact; Jim Leary (973) 774-4200.

Fast Track Electric Formerly Tri-State Communications; Cellular Industry: Concrete foundations, utility excavation, fencing and land clearing. Contact; Jonathan Owens (516) 250-9761.

Newman Development Group; Land Development Contractor: Complete demolition of 132,000 square foot furniture warehouse. We completed project 30 days ahead of schedule. Contact; John Joseph (610) 417-0039.

High Tech Landscapes: Provide snow plowing and salting services during the winter months for various commercial and residential sites. During the summer provide trucking and grading services. Contact; Gary Mozingo (908) 552-1951

Metal Building Erectors: Installation of concrete foundations for various metal building sites in multiple states. Contact; Jack Havely (304) 586-9341

SMB

Jeffrey Brown

**THE HILLIS
GROUP, LLC
SINCE 2004**

2100 Wood Avenue
Easton, PA 18042

Tel: 610-438-3921
Tel: 610-438-3928
Fax: 610-438-3830

Visit our website at
www.thehillisgroup.com



We Welcome Visitors

Located Minutes
from Route 22

Close to Route 611

Easy Access from
Route 33

Close to Route 78

The Hillis Group, LLC Equipment List

Excavators:

John Deere 200
John Deere 160LC with manual thumb and 3' bucket (36,000 pounds)
available with 3,000 pound hydraulic breaker
John Deere 270CLC with grapple 3' bucket and 5' bucket (64,000 pounds)
Kobelco EC-35 mini excavator with hydraulic thumb (8,000 pounds)
John Deere 35DZTS mini excavator with hydraulic thumb (8,500 pounds)
John Deere 50DZTS mini excavator with hydraulic thumb (12,000 pounds)

Bulldozer:

John Deere 650H

Rubber Tire Backhoes:

Cat 416B 4 x 4 with extend-a-hoe
John Deere 410E 4x4 with extend-a-hoe

Skid Loader/Compact Track Loaders:

New Holland LS180
John Deere CT322
John Deere CT332 (2)
John Deere 333
John Deere 319

Skid loader and Compact Track Loader Attachments:

72" Alamo Brush Cutter
Forks
Hydraulic Auger (various bits available)
(2) Harley Rake's
(3) Preporater / Rock hound's
Construction Buckets
Brillion Drill Seeder
3,000 lb Indeco hydraulic breaker

Wheel Loader:

John Deere 644C 4 ½ CY Bucket and Forks

Dump Trucks / Tractor Trailer:

(2) F-550 Mason dump
(2) Tandem Axle Dumps available with 20 Ton Tag-a-long
Tri-axle Dumps
Tractors with Low-Boy / Box Trailer

Snow Plows /Salt applicators:

(7) Western snow plows (mounted on 4x4 pickups)
(1) 2CY Western Ice Breaker salt spreader
(1) 1 CY Western Tornado poly hopper spreader
(1) Swenson tail gate spreader

**THE HILLIS
GROUP, LLC
SINCE 2004**

2100 Wood Avenue
Easton, PA 18042

Tel: 610-438-3921
Tel: 610-438-3928
Fax: 610-438-3830

Visit our website at
www.thehillisgroup.com



We Welcome Visitors

Located Minutes
from Route 22

Close to Route 611

Easy Access from
Route 33

Close to Route 78

The Hillis Group, LLC Equipment List

Additional Equipment:

300 Gallon Hydro Mulcher
(11) Fiberglass plates (crane mats)
Walk Behind Saw (asphalt / concrete)
Jumping Jack
Plate Compactor
Remote Controlled Vibratory Trench Roller
Vermeer Walk Behind Trencher
Chain Saws
Chop Saws
Miller Stick Welder with Mig Attachment
Concrete Vibrator
Laser Transits
Reinco Bale Chopper
185 CFM Air compressor with hammers (35, 60, and 90 pounds)

(2) 16,000 lb landscape trailer
(2) 18,000 lb landscape trailer
20 Ton Tag Along
48' Box Trailer

Trucks

F 450 Super Duty Bed/Dump
F 450 Utility Body (2)
F 350 4 DR
F 250 4x4
F 250
F 150
F 550 Mason Dump (2)
Dodge Durango
Ford Escape

Additional